

# SIU YIN WAI & ASSOCIATES LIMITED

## SYW & ASSOCIATES LIMITED



公司介紹

[www.siuyinwai.com](http://www.siuyinwai.com)

## ABOUT US



Established in Hong Kong since 1983, SYW & Associates Limited has been providing comprehensive project management, architectural and engineering consulting services in HK, Macau and Mainland China. The firm specializes in the planning, design and construction of all sorts of building developments by deploying expert structural, and geotechnical engineering know-how and all-round knowledge of the geological and environmental nature in the regions. We have a team of over 200 reputable and highly qualified engineers, architects and technical staff capable to provide a total construction solution to our clients.

As reflected in our job experience, we have been engaged in diverse capacity on numerous prestigious medium to very large-scale developments in Hong Kong, Macau and Mainland China. We always maintain suitable and adequate highly skilled personnel to provide integrated services specifically tailored to our client's requirements. The overriding pursuit of our firm is to provide quality, satisfactory and personalized service to our clients on all projects through hands-on involvement of all tiers of our management and professionals to strive for cost-effective design and exceeding our clients' expectations.

We are on the list of Band One Consultants under the Architectural and Associated Consultants Selection Board (AACSB) under the Development Bureau. As a Band One consultant, the top-listed consulting service provider for the Hong Kong Housing Authority and Architectural Services Department (under the AACSB), we are entitled to provide consulting services with no limitation on project nature and contract sum. We are also on the list of Geotechnical Consultants for Landslip Preventive Measures (LPM) Consultancy and Related Geotechnical Consultancy for the Geotechnical Engineering Office of the Hong Kong SAR Government.

For the past years, we have successfully completed many large prestigious projects in Hong Kong. Our notable clients include the MTRC, Sun Hung Kai Properties Group, PCCW, Hong Kong Land, Sino Group, Kerry Properties, KWah Group, Lai Sun Development Co. Ltd., Chinachem Group, Hong Kong Housing Society, Shun Tak Development, Goldin, MGM Resorts Int'l, Goodman Group etc. In these past projects, we have always provided cost effective and pragmatic designs to the satisfaction of our clients.

Our competitive advantages are firstly we possess the experience of having successfully completed projects in all areas of the territory. This translates to a detailed knowledge of most proposed developments' local subsurface and coastal conditions and other constraints. Thus, enabling us to advance viable, and cost-effective technical solutions to our client even at the most preliminary stage. Secondly, we have all the highly sophisticated tools and trained personnel to conduct advanced analyses to achieve fast and precision design for all sorts of building, geotechnical and structural models. Thirdly, we are fully conversant with the





邵賢偉建築工程師  
SYW & ASSOCIATES LTD.  
CHARTERED ENGINEERS & AUTHORIZED PERSONS

## ABOUT US



pre-approval consulting service and the approval and consent procedures of the Buildings Department (BD), the Geotechnical Engineering Office (GEO) etc. in Hong Kong and DSSOPT, IAM, DSAT, MLM, GDI etc. in Macau to ensure prompt approval of our project submissions to allow early start of the works on project sites.

SYW & Associates not only have the experience and ability to design for special and complex structures, but also the ability to resolve major civil, structural and geotechnical issues for problematic projects. Typical examples are the independent role of SYW & Associates appointed by the Mass Transit Railway Corporation Limited (MTRCL), Hong Kong to give expert advice on the investigation of the problematic couplers installed at the platform slab, the North & South approach tunnels and the stabling siding of Hung Hom Station, Shatin-Central Line; and the excessive settlement of the existing pedestrian walkway tunnel connecting the Ho Man Tin Station to the exit points adjoining a private development site. In these two incidences, SYW are to provide expert advice to determine the cause of the problems and ways to resolve the issues to allow for recommencement of the works which have been ceased by the authorities.

We are also proud to be the Structural Engineer of the Spectacle Roof at MGM Cotai Casino and Hotel in Macau, which has achieved a GUINNESS WORLD RECORDS title on January 19, 2019. The Spectacle Roof at MGM COTAI, is the record holder of “the world’s largest free-span gridshell glazed roof (self-supporting)”, making it the first architectural and structural GUINNESS WORLD RECORDS title for Macau, China. The Spectacle is an immersive space of creative and dynamic design, merging nature and cutting-edge technology. Costing over HK\$250 million to build, the Spectacle Roof spans a phenomenal distance of 138.5m. SYW & Associates Ltd. using their ingenuity and highly cost-effective technical solutions created a lightweight steel structure, consisting of a free forming triangulated steel grid shell system; and supported purely along its perimeter. Thus, creating a column free, unobstructed, engineering feature spectacle in Macau worthy of the GUINNESS WORLD RECORDS title.



MGM Cotai, Spectacle Roof





邵賢偉建築工程師  
SYW & ASSOCIATES LTD.  
CHARTERED ENGINEERS & AUTHORIZED PERSONS

## 公司簡介



邵賢偉建築工程師有限公司在香港成立已超過 35 年，業務範圍包括建築設計編製、工程監理及專案管理。服務團隊由多名資深建築師、工程師和技術人員組成，各成員在大型項目的規劃、設計、施工監理與專案管理等各個領域，均累積了豐富的专业知識與實務經驗，是香港及澳門行內具領導地位的結構及岩土工程設計顧問公司，在澳門及珠海亦設有分公司，擁有各級富有經驗的建築設計團隊、工程師及技術人員超過 200 人，技術力量雄厚。

本司多年來多次獲得國際建築結構獎項，包括由英國及香港工程師學會頒發的最傑出結構設計大獎，這是對本司在香港及澳門作為一優越專業工程顧問的認同。

本公司承接中港澳以及外國財團投資的多項大型工程項目，致力提供有關工程及專案管理等的顧問服務，著名客戶包括新鴻基地產集團、信德集團、電訊盈科、香港置地、嘉里建設、嘉華、麗新發展有限公司、港鐵、恒基兆業地產有限公司、華懋集團與香港房屋協會等。

在大型建設項目中，本公司歷年擔任香港眾多大型項目的專業顧問，包括馬灣 - 珀麗灣、壹號雲頂、貝沙灣、企業廣場五期 Mega Box、曼克頓山、南灣、海璇、皓畋、天寰、天鑽等，在澳門亦參與多項大型發展的建築計劃編製、指導、監理及專案管理，已完成的項目包括有澳門美高梅金殿賭場酒店、壹號湖畔、永念庭、濠珀、濠尚、金峰南岸及澳門美獅美高梅賭場酒店等。

公司多年來致力參與香港及澳門各大型項目的設計及質量管理，除不斷引入新的設計理念令各項目更具成本效益，在施工管理上也引入新的模式，讓項目進度及質量控制有明顯改善。近年更把預製組件的建造方法引入澳門的壹號湖畔及海一居兩大地標項目，除可達至有較環保的施工建造外，更可提高項目整體進度及質量。



## 公司簡介



SYW & Associates 不僅具有設計特殊和複雜結構的經驗和能力，而且還具有解決在重大土木、結構和岩土工程項目上問題的能力。典型的是由香港鐵路有限公司 ( MTRCL ) 任命本公司為獨立顧問，以對安裝在沙中線紅磡站的側板、平臺和南北引道上有問題耦合器作調查，以及對連接何文田站與毗鄰私人發展項目出口現有行人天橋隧道超額沉降提供專家意見。在這兩個案中，本公司提供專家意見，以確定問題的原因以及提出解決問題的方法，以使被停止的工程得以重新開始。

本公司也很榮幸為澳門美高梅路氹城賭場酒店視博廣場玻璃屋頂的結構工程師，該項結構工程於 2019 年 1 月 19 日獲得了健力仕世界紀錄的頭銜。視博廣場是一個充滿創意和動態設計的沉浸式空間，融合了自然與尖端技術。玻璃屋頂擁有驚人的 138.5m 跨距，本公司憑藉其獨創性和極具成本效益的技術解決方案，創建了一個輕型鋼結構，該結構由自由成形的三角鋼格系統組成，並只完全由其周邊支撐。路氹城美獅美高梅視博廣場的玻璃屋頂是“世界上最大自由跨度的網格玻璃屋頂 ( 自承重 )”，其通暢中間無柱的特徵奇觀，使其成為中國澳門首個擁有健力仕世界紀錄頭銜的建築和結構項目。

邵賢偉博士去年被內地建委委任為廣東省超限高層抗震專家委員，是珠海及澳門唯一在超限專家庫的專家。他亦是現役的澳門大學客座教授。

本公司也是今年首間在橫琴獲得專業資格的顧問公司，專業包括：

- 1) 設計業務(建築工程、道路工程設計)及
- 2) 監理業務(房屋建築工程、市政公用工程監理)。

公司亦有多名工程師及建築師在橫琴獲得專業認可及簽則資格，可直接簽則。





## KEY STAFF



### Managing Director

Prof. Dr. SIU Yin Wai

### Professional Qualification

BASc, CE (Ottawa), MPTI (USA), CEng, Professional Engineer (Canada), FICE, FHKIE (Building, Civil, Fire, Geotechnical, Structural), RSE, RGE, Authorized Person, RPE (Building, Civil, Fire, Geotechnical, Structural), Registered Civil Engineer (Macau), 1RSE-PRC (國家一級註冊結構工程師), 廣東省超限高層抗震專家委員  
Adjunct Professor of University of Macau

### Executive Directors

LAI Siu Lun, Benny

### Professional Qualification

BASc (Hons), CEng, FHKIE (Structural, Fire), FIStructE, RPE, RSE, RGE, Authorized Person, 1RSE-PRC(國家一級註冊結構工程師)

YU Wai Ching, Samuel

BSc., MSc, CEng, MIStructE, MHKIE, RPE, RSE, RI, Registered Civil Engineer (Macau), 1RSE-PRC(國家一級註冊結構工程師)

### Technical Directors

LEE Wing Cheung

### Professional Qualification

BSc, MSc, FHKIE (Geotechnical, Civil), RPE,  
Former Chief Geotechnical Engineer of HK Geotechnical Engineering Office

PANG Tat Choy, Paul

BEng, CEng, PEng, RSE, RPE, FHKIE, FIStructE, HonFHKISC, MICE,  
Authorized Person, 1 RSE-PRC (國家一級註冊結構工程師),  
Former Assistant Director of the HK Building Department

### Directors

CHENG Chun Wah, Anthony

### Professional Qualification

BASc (Hons), CEng, MIStructE, MHKIE, RPE, RSE

CHEUNG Cheung Chun, Perry

BEng(Hons), MSc, CEng, MIStructE, MHKIE, RPE

PUN Chupman

BASc, MSc(Structural), CEng, MIStructE, MHKIE, RPE

YUEN Yat Chung, Dennis

BASc (Hons), MHKIE, RPE, RSE, BEAM Pro

### Associate Directors

TANG Man Kin, Raymond

### Professional Qualification

BEng(Hons), CEng, MIStructE, MHKIE, RPE

TSOI Wa Yeung, Simon

BEng, MPhil, PhD (Geotechnical), CEng, MIMMM, MHKIE, RPE (Geotechnical)

WAN Chi Pan, Sylvian

BEng (Hons)

### Associates

CHONG Lo Kao, Stephen

### Professional Qualification

BSc, Registered Civil Engineer (Macau)

LEUNG Sui Chung, Peter

BEng (Civil), MSc, MHKIE, RPE (Civil, Geotechnical)

MEI Wen Kai

BSc, 1RSE-PRC (國家一級註冊結構工程師)

SIU Jiehau, Richard

B.Arch; M.Arch; Registered Architect (Macau)

Choy Tak Chuen, Alex

BEng(Hons), MSc, CEng, MHKIE, MIStructE, RPE

Huang GuangZong, Edwin

BEng(Hons), MSc, MHKIE, RPE, MCSCEHKB, 2RSE-PRC

Wong Chung Yin, Elfin

BEng(Hons), MHKIE, RPE



邵賢偉建築工程師  
SYW & ASSOCIATES LTD.  
CHARTERED ENGINEERS & AUTHORIZED PERSONS

## CONTACT US



### **WEBSITE**

[www.siuynwai.com](http://www.siuynwai.com)

### **HONG KONG**

Address: 8/F, Lippo Leighton Tower, 103 Leighton Road, Hong Kong

Email: [info@siuynwai.com](mailto:info@siuynwai.com)

Telephone: (852) 2881 6996

Fax: (852) 2895 0365

### **MACAU**

Address: 5 Andar L, Edf. Kin Heng Long Plaza, 258, Alameda Dr. Carlos D' Assumpcao, Macau

Email: [macauoffice@siuynwai.com](mailto:macauoffice@siuynwai.com)

Telephone: (853) 2832 3322

Fax: (853) 2833 1483

### **ZHUHAI**

Address: 2701 -03, Blk 11, Ming Zhu Shan Zhang, 17 Yue Hai Xi Lu, Qian Shan, Zhuhai

Email: [zh-accounts@siuynwai.com](mailto:zh-accounts@siuynwai.com)

Telephone: (86) 756 853 7722

Fax: (86)756 850 6812



## Awards



### Guinness World Record 2019 – Largest Free-Span Gridshell Glazed Roof : MGM Cotai

Structural Engineer: Siu Yin Wai & Associates Ltd.

Developer: MGM Resorts Int'l

### Quality Building Award 2016 – Certificate of Merit Award : Mount One

Structural Engineer: Siu Yin Wai & Associates Ltd.

Developer: Sun Hun Kai Properties Limited

### Quality Building Award 2014 – Certificate of Grand Award : China Resources Building

Structural Engineer: Siu Yin Wai & Associates Ltd.

Developer: China Resources Property Ltd.

### Quality Building Award 2014 – Certificate of Merit Award : One Central

Structural Engineer: Siu Yin Wai & Associates Ltd.

Developer: Propiedades Sub F, S.A. (J.V. Hongkong Land Ltd. and Shun Tak Development

### Structural Special Award 2008 by HKIE & IStructE U.K. : MGM Grand Macau

Structural Engineer: Siu Yin Wai & Associates Ltd.

Developer: MGM Grand Paradise Ltd.

### Structural Special Award 2008 by HKIE & IStructE U.K. : Megabox

Structural Engineer: Siu Yin Wai & Associates Ltd.

Developer: Kerry Properties Management (HK) Ltd.

## Appreciation Letters

<p><b>Kerry Properties (H.K.) Limited</b> 嘉華集團有限公司</p> <p>2<sup>nd</sup> February 2016</p> <p><b>TO WHOM IT MAY CONCERN</b></p> <p>Siu Yin Wai &amp; Associates Limited has rendered its professional services as Structural and Geotechnical Engineer to a number of our residential projects in the past few years. We are very pleased with their performance including their fast response to provide engineering solutions and their flexibility with government procedures and requirements.</p> <p>They can always provide buildable and economical design and their staffs are fully trained and conversant with both government and construction procedures.</p> <p>We have no doubt to recommend Siu Yin Wai &amp; Associates Limited to provide engineering services to you.</p> <p>Yours faithfully, Kerry Properties (HK) Ltd.</p> <p><i>Wille Lee</i> Wille Lee Executive Director</p>	<p><b>嘉華物業管理有限公司</b> KERRY PROPERTIES MANAGEMENT SERVICES LIMITED</p> <p>Our Ref: PM/SGCEN/16/001/1W 4 February 2016</p> <p><b>TO WHOM IT MAY CONCERN</b></p> <p>Dear Sirs,</p> <p>We have employed Siu Yin Wai &amp; Associates Limited (SYW) as both Structural Engineer and Geotechnical Engineering capacities on a number of our residential projects over the last few years. They delivered their duties professionally and efficiently and we are pleased with their performance.</p> <p>We have no hesitation in recommending Siu Yin Wai &amp; Associates Limited to be appointed as Structural Engineering/Geotechnical Engineering Consultants.</p> <p>Thank you for your attention.</p> <p>Yours faithfully, David Lee Director (HK) Kerry Properties 17/2/16</p>	<p><b>Hongkong Land</b></p> <p>2<sup>nd</sup> February 2016</p> <p><b>TO WHOM IT MAY CONCERN</b></p> <p>Siu Yin Wai &amp; Associates Limited (SYW) has rendered its professional services to a number of our residential projects in a very satisfactory manner. Their staffs are fully trained and conversant with both government and construction procedures, and their structural design is lean and economical. The overall performance generally exceeded our expectation from time to time.</p> <p>In view of the above, this firm has been retained on our list and will continue to be invited to submit proposals for our future projects.</p> <p>Yours faithfully, For Hongkong Land Limited</p> <p><i>Robert Wong</i> Robert Wong Executive Director</p>	<p><b>MGM GRAND</b> 美高梅大飯店</p> <p>2<sup>nd</sup> February 2016</p> <p><b>TO WHOM IT MAY CONCERN</b></p> <p>我們非常感謝SYW在過去數年為我們提供結構工程、地質工程、建築工程、以及相關的專業服務。他們的工作表現非常專業和有效率，我們對他們的服務感到非常滿意。我們很高興地推薦SYW為我們的未來項目提供專業服務。</p> <p>此致，此致，此致</p> <p>美高梅大飯店有限公司</p> <p><i>Wille Lee</i> Wille Lee Executive Director</p>
--	--	--	---





**邵賢偉建築工程師**  
SYW & ASSOCIATES LTD.  
CHARTERED ENGINEERS & AUTHORIZED PERSONS



**邵賢偉建築工程師**  
SYW & ASSOCIATES LTD.

**35+**  
YEARS SINCE 1983

感謝多年以來的支持及信任  
Thank you for your support and trust.



**SYW & ASSOCIATES LTD.**  
Chartered Engineers & Authorized Persons

**邵賢偉建築工程師**

SYW & Associates Ltd. is a leading multidisciplinary consultancy firm specializing in project management; civil, structural, geotechnical engineering; and Authorized Persons consultancy services. Our expertise is in achieving innovative and economical design in building construction while delivering quality services to meet our clients' requirements and expectations.

8th Floor, Lippo Leighton Tower, 103 Leighton Rd., Causeway Bay, Hong Kong  
Tel: (852) 2881 6996 Fax: (852) 2895 0365

5 Andar L, EDF, Kin Heng Long Plaza, 258 Alameda Dr. Carlos D' Assumpcao, Macau  
Tel: (853) 2832 3322 Fax: (853) 2833 1483

2701-03, Bk 11, Ming Zhu Shan Zhang, 17 Yue Hai Xi Lu, Qian Shan, Zhuhai  
Tel: (86) 0756 8506511 Fax: (86) 0756 8506812

office@siuyinwai.com

www.siuyinwai.com

#### Managing Director, Founder

**Prof. Dr. SIU Yin Wai**

BASc, CE (Ottawa), MPFI (USA),  
CEng, Professional Engineer (Canada), FICE,  
FHKIE (Building, Civil, Fire, Geotechnical, Structural),  
RPE (Building, Civil, Fire, Geotechnical, Structural),  
RGE, RSE, Authorized Person,  
Registered Civil Engineer (Macau),  
1RSE-PRC (國家一級註冊結構工程師),  
Adjunct Professor (University of Macau)

#### Executive Directors

**LAI Siu Lun, Benny**

BASc (Hons), CEng, FHKIE (Structural, Fire), FISTructE,  
RPE, RSE, RGE, Authorized Person,  
1RSE-PRC (國家一級註冊結構工程師)

**YU Wai Ching, Samuel**

BSc, MSc, CEng, MISTructE, MHKIE, RPE, RSE,  
Registered Civil Engineer (Macau),  
1RSE-PRC (國家一級註冊結構工程師)

#### Technical Directors

**LEE Wing Cheung**

BSc, MSc, FHKIE (Geotechnical, Civil), RPE,  
Former Chief Engineer of Geotechnical Engineering Office, HK

**PANG Tat Choy, Paul**

BEng, CEng, PEng, RSE, RPE, FHKIE, FISTructE,  
Authorized Person, Non-FHKIE, MICE,  
1 RSE-PRC (國家一級註冊結構工程師),  
Former Assistant Director of Buildings Department, HK

#### Directors

**CHENG Chun Wah, Anthony**

BASc (Hons), CEng, MISTructE, MHKIE, RPE

**CHEUNG Cheung Chun, Perry**

BEng (Hons), MSc, CEng, MISTructE, MHKIE, RPE

**PUN Chupman**

BASc, MSc (Structural), CEng, MISTructE, MHKIE, RPE

#### Associate Directors

**TANG Man Kin, Raymond**

BEng (Hons), CEng, MISTructE, MHKIE, RPE

**TSOI Wa Yeung, Simon**

CEng, MPhil, PhD (Geotechnical), CEng, MIMMM,  
MHKIE (Geotechnical)

**YUEN Yat Chung, Dennis**

BASc (Hons), MHKIE, RPE, RSE, BEAM Pro

**WAN Chi Pan, Sylvian**

BEng (Hons), MCSCENKS

#### Associates

**CHONG Lo Kao, Stephen**

BSc, Registered Civil Engineer (Macau)

**LEUNG Sui Chung, Peter**

BEng (Civil), MSc, MHKIE, RPE (Civil, Geotechnical)

**MEI Wen Kai**

BSc, 1RSE-PRC (國家一級註冊結構工程師)

## Selected Projects for Reference

部分項目作參考

### Residential Development at Wong Chuk Hang MTR Station (Site A, Site B, and Site D)



#### Proposed Development for Wong Chuk Hang Station Package 1, Site A Development

**Client :** MTR Corporation Ltd and Ease Harvest Investments Ltd

2 blocks of 34-storey residential building over Wong Chuk Hang MTR depot

**Involvement :** Structural & Geotechnical Engineering

#### Proposed Development for Wong Chuk Hang Station Package 2, Site B Development

**Client :** MTR Corporation Ltd and Kerry Project Management (HK) Limited

2 blocks of 30-storey residential building over Wong Chuk Hang MTR depot

**Involvement :** Structural & Geotechnical Engineering

#### Proposed Development for Wong Chuk Hang Station Package 4, Site D Development

**Client :** MTR Corporation Ltd and WCH Property Development Co. Ltd. c/o Kerry Properties Management

1 block of 16-storey residential building with 3-level of podium and 1 level of basement for car parking spaces and public light bus terminal

**Involvement :** Structural & Geotechnical Engineering





**Lot No. 1040 in DD No. 103, West Rail Kam Sheung Road Station Package 1 Property Development**

7 blocks of 17-storey residential buildings and 2-level of basement

**Client :** MTR Corporation Ltd and  
Grand Ample Ltd. c/o Sino Group Ltd.

**Involvement :** Structural & Geotechnical Engineering



**Proposed Residential Development at TPTL No. 221, Shan Tong Road, Lai Chi Shan, Tai Po, N. T. (天鑽)**

16 Towers of 10-to-18-storey residential buildings with 2-to 3-storey of Podium and 1 level of basement

**Client :** China Overseas Property Limited

**Involvement :** Structural, Civil & Geotechnical  
Engineering



**Proposed Residential Development at N.K.I.L. 6533,  
no.3 Lung Kui Road, Beacon Hill, Kowloon**

5 blocks of 7-storey residential blocks and 3 houses  
with 1-level of basement

**Client :** Kerry Project Management (HK)  
Limited  
嘉里物業管理服務有限公司

**Involvement :** Structural & Geotechnical Engineering



**Proposed Development of the Fullerton Hotel at  
Ocean Park, Tai Shue Wan, Aberdeen, Hong Kong  
at R.B.L. 1020 & EXT.**

2 blocks of 10-storey Hotel Towers with 4-storey  
Podium

**Client :** Parkland (Hong Kong) Limited  
c/o Sino Group

**Involvement :** Structural & Geotechnical Engineering



**Mega Box**  
企業廣場五期

2 blocks of 34 Storey Office and Retail Mall

Proposed Development at Kowloon Bay, NKIL5927

**Client :** Kerry Properties Management  
嘉里建設有限公司

**Involvement :** Structural & Geotechnical Engineering



**West Kowloon Government Offices**

西九龍政府合署

2 blocks of 18 storey government offices

11 Hai Ting Road , Yau Ma Tei, Kowloon, Hong Kong

**Client :** Hong Kong S.A.R.

**Involvement :** Structural & Geotechnical Engineering





**The Octagon**

嘉達環球中心

36 Storey Commercial Tower

No. 6 Sha Tsui Road, Tsuen Wan

**Client :** K. Wah Properties (Holdings) Limited  
嘉華地產(集團)有限公司

**Involvement :** Authorized Persons, Structural &  
Geotechnical Engineering



**Goodman Interlink**

22 Storey Logistics Centre

39 Tsing Yi Rd, Tsing Yi

**Client :** Goodman Group

**Involvement :** Authorized Persons, Structural &  
Geotechnical Engineering



**Victoria Harbour**  
海璇

10 blocks of 18-storey residential building with 1-storey of podium with bus terminal and 3-storey of basement

Java Road and Tin Chiu Street, North Point

**Client :** Sun Hung Kai Real Estate Agency Ltd.  
新鴻基地產發展有限公司

**Involvement :** Structural & Geotechnical Engineering



**Belair Villa**  
萬豪居

45 house of 4-storey residential buildings

F.S.S.T.L. 116 Fanling, N.T.

**Client :** Rich Oasis Ltd. (Fu Hope)  
富合置業有限公司

**Involvement :** Structural & Geotechnical  
Engineering



**Villa La Plage**  
**臻譽**

19 nos. of apartment in single podium, 20 blocks of 2 to 3-storeyhouses, 1 & 2-level of podium

51 – 75 Castle Peak Road, Castle Peak Bay, Tuen Mun

**Client :** Poly Property Group Co., Ltd.  
保利置業集團有限公司

**Involvement :** Structural & Geotechnical Engineering







邵賢偉建築工程師  
SYW & ASSOCIATES LTD.  
CHARTERED ENGINEERS & AUTHORIZED PERSONS

## Selected Residential Projects



### Mantin Heights

皓畋

9 blocks of 27-storey residential building with 2-storey basement and clubhouse

Sheung Lok Street & Sheung Shing Street, Ho Man Tin

**Client :** Kerry Project Management (HK) Limited  
嘉里物業管理服務有限公司

**Involvement :** Structural & Geotechnical Engineering



### Mont Rouge

緹山

2 blocks of 7-storey residential buildings and 19 nos. of houses with basement and clubhouse

9 Lung Kui Road, Beacon Hill

**Client :** Kerry Project Management (HK) Limited  
嘉里物業管理服務有限公司

**Involvement :** Structural & Geotechnical Engineering



**Larvotto**  
南灣

9 residential towers with 3 storey podium

8 Ap Lei Chau, Praya Road, Hong Kong

**Client :** Sun Hung Kai Real Estate Agency Ltd.  
新鴻基地產發展有限公司

**Involvement :** Structural & Geotechnical Engineering



**The Vineyard**  
葡萄園

162 blocks of low rise residential building with clubhouse

Various Lots in DD 104 & 105, Ngau Tam Mei Road

**Client :** Sun Hung Kai Real Estate Agency Ltd.  
新鴻基地產發展有限公司

**Involvement :** Structural & Geotechnical Engineering



邵賢偉建築工程師  
SYW & ASSOCIATES LTD.  
CHARTERED ENGINEERS & AUTHORIZED PERSONS

## Selected Residential Projects



### **Twin Peaks** 嘉悅

2 residential towers with 3-storey of podium and 2-storey of basement

9 Chi Shin Street, Tseung Kwan O

**Client :** K.Wah International Holdings Limited  
嘉華國際集團有限公司

**Involvement :** Structural & Geotechnical Engineering



### **Peak One** 壹號雲頂

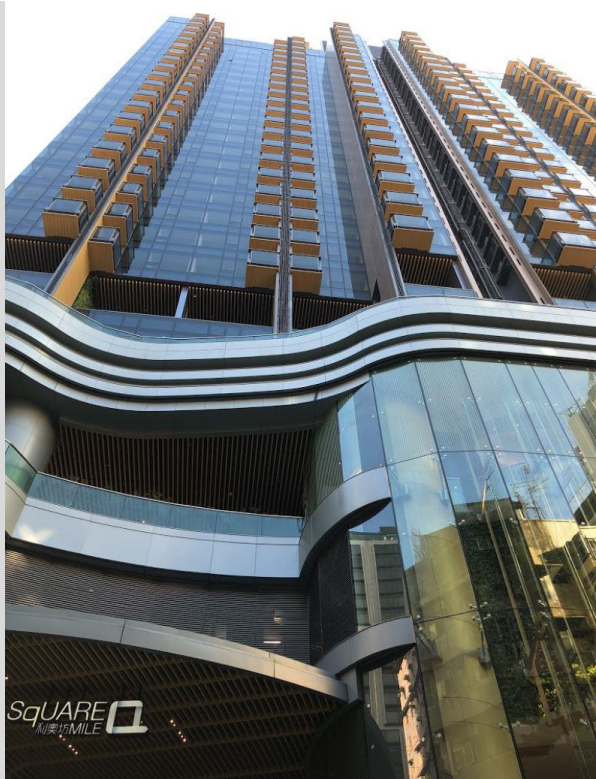
8 blocks of 14-15 storey residential building on 8 levels of podium

Tung Lo Wan Hill Road, Shatin, N.T.

**Client :** Sun Hung Kai Real Estate Agency Ltd.  
新鴻基地產發展有限公司

**Involvement :** Structural Engineering





**Eltanin Square Mile**

利奧坊 - 曉岸

1 block of 30-storey residential building

No.11-13 Li Tak Street, Tai Kok Tsui

**Client :** Henderson Real Estate Agency Ltd.  
恆基兆業地產有限公司

**Involvement :** Structural & Geotechnical Engineering



**High One**  
曉悅

1 block of 30-storey residential building

Nos. 565 – 577, Fuk Wa Street, Cheung Sha Wan

**Client :** Henderson Real Estate Agency Ltd.  
恆基兆業地產有限公司

**Involvement :** Structural & Geotechnical Engineering



邵賢偉建築工程師  
SYW & ASSOCIATES LTD.  
CHARTERED ENGINEERS & AUTHORIZED PERSONS

## Selected Residential Projects



### **Heya Delight, Heya Crystal, Heya Aqua, Heya Star**

**喜盈, 喜薈, 喜漾 & 喜韻**

4 blocks of 30-storey residential buildings over podiums at sites K20, K21, K22 and K23

K20, K21, K22 & K23, Sham Shui Po

**Client :** Hong Kong Housing Society  
香港房屋協會

**Involvement :** Structural & Geotechnical Engineering





邵賢偉建築工程師  
SYW & ASSOCIATES LTD.  
CHARTERED ENGINEERS & AUTHORIZED PERSONS

## Selected Residential Projects



### Residence Bel-Air 數碼港 - 貝沙灣

44 blocks of 48 storey residential buildings on 5 level of carpark podium

CyberPort Residential Development

**Client :** Pacific Century Cyber Works Ltd.  
(PCCW)  
電訊盈科有限公司

**Involvement :** Structural & Geotechnical Engineering







**Villa Concerto, Symphony Bay**  
**帝琴灣**

10 block of 8 storey residential building on 1storey podium

TPTL146, Cheung Muk Tau, N.T.

**Client :** Sun Hung Kai Real Estate Agency Ltd.  
新鴻基地產發展有限公司

**Involvement :** Structural Engineering



**Park Island**  
**馬灣 - 珀麗灣**

31 block of luxury residential towers

Ma Wan Lot no. 392, Ma Wan Island, N.T.

**Client :** Sun Hung Kai Real Estate Agency Ltd.  
新鴻基地產發展有限公司

**Involvement :** Structural Engineering



**MGM COTAI**  
美獅美高梅

**36 Storey Hotel with Casino Podium and 3 level basement.**

Nam Van, Macau

**Client :** Shun Tak Group / MGM JV Development  
信德集團有限公司 / 美高梅金殿澳門

**Involvement:** Authorized Persons, Project Management,  
Structural, Geotechnical & Civil Engineering







**One Central**  
**壹號湖畔**

Hotel Retail Residential complex of 45-storey hotel, podium, 52-storey residential towers, 2-level basement.

Nam Van, Macau

**Client :** Shun Tak Group / HK Land  
信德集團有限公司 / 香港置地集團公司

**Involvement:** Structural, Geotechnical & Civil Engineering



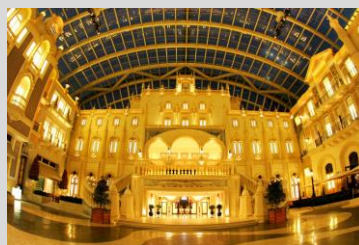
**MGM**  
**美高梅金殿**

Casino and 35-storey Hotel.

Nam Van, Macau

**Client :** Shun Tak Group / MGM JV Development  
信德集團有限公司 / 美高梅金殿澳門

**Involvement :** Structural, Geotechnical & Civil Engineering







**One Oasis**  
**金峰南岸**

18 blocks of luxury residential towers with clubhouse and retail plaza

Coloane, Macau

**Client :** Empresa De Fomento Industrial e Commercial Concordia S.A. (Nan Fung)

**Involvement :** Structural, Geotechnical and Civil Engineering





**Nova City Phase 4 (Nova Park)**

**濠珀**

**3 blocks of 42-storey residential buildings**

Taipa, Macau

**Client:** Shun Tak Group 信德集團有限公司

**Involvement:** Structural and Geotechnical Engineering



**Nova City Phase 5 (Nova Grand)**

**濠尚**

**8 blocks of 46-storey residential buildings with podium mall and 3-level of basement carpark**

Taipa, Macau

**Client:** Shun Tak Group 信德集團有限公司

**Involvement:** Structural and Geotechnical Engineering





**Hengqin Office and Serviced Apartment**

信德橫琴口岸服務區 A03 地塊

**Client :** Shun Tak Development

**Involvement :** Structural & Geotechnical Engineering



## 邵賢偉建築工程師有限公司在橫琴的業務新貌

由本公司负责，在橫琴口岸旁信德的大型發展項目數月前剛落成，這項目其中一幢為二百多米超高層混凝土建築，三層的地庫与城際輕軌及口岸联检大樓相連。

邵賢偉博士去年被內地建委委任為廣東省超限高層抗震專家委員，是珠海及澳門唯一在超限專家庫的專家。他亦是現役的澳門大學客座教授。

本公司也是今年首間在橫琴獲得專業資格的顧問公司，專業包括：

- 1) 設計業務(建築工程、道路工程設計)及
- 2) 監理業務(房屋建築工程、市政公用工程監理)。

公司亦有多名工程師及建築師在橫琴獲得專業認可及簽則資格，可直接簽則。



橫琴口岸旁信德大型發展項目



邵賢偉建築工程師  
SYW & ASSOCIATES LTD.  
CHARTERED ENGINEERS & AUTHORIZED PERSONS

## 广东省超限高层建筑工程抗震设防 审查专家确认函

邵贤伟先生：

感谢您对广东省超限高层建筑工程抗震管理的关心和支持。经有关部门推荐以及广东省超限高层建筑工程抗震设防审查专家委员会相关专家讨论，您符合第五届广东省超限高层建筑工程抗震设防审查专家入库条件，待呈报广东省住房和城乡建设厅审批后正式发文明确。

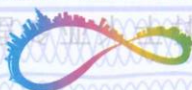
特预告知。



广东省超限高层建筑工程  
抗震设防审查专家委员会办公室

2019 年 06 月 12 日





HENGQIN 橫琴

# 港澳建筑及相关工程专业人士 执业资格备案认可书

备案编号: MORS-2020-0021

姓名: 邵贤伟

性别: 男

出生日期: 1947 年 1 月 8 日

港澳执业资格名称:

香港认可人士

香港注册结构工程师、香港注册岩土工程师

香港注册专业工程师 (BUD、CVL、FRE、GEL、STL)

澳门注册土木工程师 (执行计划编制、工程指导、工程监察职务)

港澳执业资格注册编号: RSE 77/78、RGE 77/78、RP 0009857、900/1984

认可人士注册编号及有效期 (选填): AP (E) 77/78

横琴新区备案业务范围:

注册监理工程师 (有效期至: 2025 年 12 月 31 日)

注册结构工程师 (有效期至: 2025 年 12 月 31 日)

注册岩土工程师 (有效期至: 2025 年 09 月 22 日)

注册土木工程师 (有效期至: 2021 年 11 月 30 日)

注册消防工程师 (有效期至: 2021 年 11 月 30 日)

原备案日期为: 2020 年 6 月 5 日

## 重要提示

1. 备案范围: 由港澳专业人士在港澳注册的执业资格确定。
2. 信息查询: 请登录珠海市横琴新区门户网站公示系统查询。
3. 执业要求: 港澳专业人士在横琴新区内直接提供服务, 应当加入已在横琴新区备案的港澳企业或者具备相应资质的内地企业。

备案机关: 横琴新区管理委员会

备案日期: 2021 年 1 月 6 日







邵賢偉建築工程師  
SYW & ASSOCIATES LTD.  
CHARTERED ENGINEERS & AUTHORIZED PERSONS

中华人民共和国一级注册结构工程师

资格证书

依据《全国注册工程师管理委员会(结构)与香港工程师学会结构工程师资格互认协议》，经全国注册工程师管理委员会(结构)认定，邵賢偉具备中华人民共和国一级注册结构工程师资格。



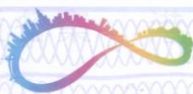
全国注册工程师管理委员会(结构)

主任

证书编号 S04HK0001

发证日期 2004年12月30日





HENGQIN 横琴

# 澳门建筑及相关工程咨询企业资质 备案认可书

备案编号: MOQY-2020-0001

企业名称: SYW 土木工程顾问有限公司

企业类型(法律地位): 法人团体

企业在澳门经营地址: 澳门宋玉生广场 258 号建兴龙广场 5 楼 L 室

企业在澳门备案类型: 澳门工程建设顾问公司

企业在澳门土地工务运输局注册编号: 3303/2008

企业驻横琴负责人: 余伟清

横琴新区备案业务范围:

- 1、设计业务: 建筑工程、道路工程设计
- 2、监理业务: 房屋建筑工程、市政公用工程监理

备案有效期至: 2021 年 12 月 31 日

原备案日期为: 2020 年 1 月 2 日

## 重要提示

1. 备案业务范围: 由企业提供的公证文书确定。
2. 信息查询: 请登录珠海市横琴新区门户网站公示系统查询。
3. 投资建议: 请投资方根据企业资质类别对应的实际业绩委托选用。

备案机关: 横琴新区管理委员会

建设环保局  
建设环保局

备案日期: 2021 年 1 月 6 日